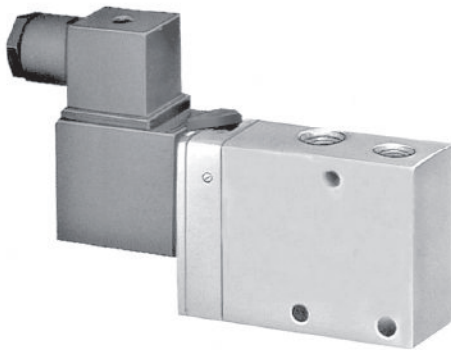
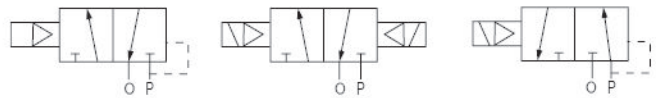


802 系列二位三通电磁阀

Series 3/2-way Solenoid Valves



图形符号 Graphical symbols



产品特点 Features

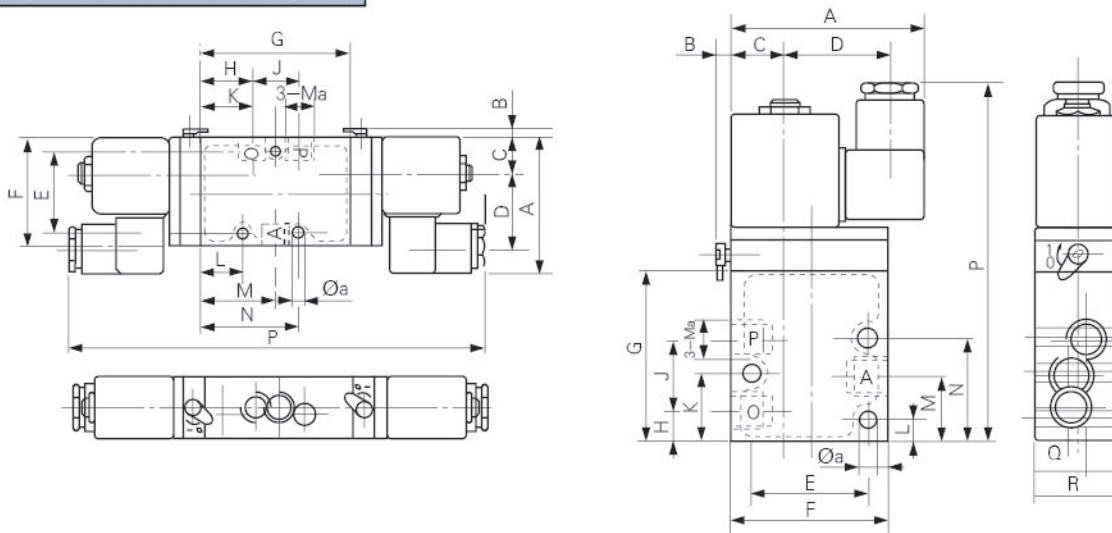
802电磁换向阀广泛适用于工作条件好，安装空间小等场合的气动自动化控制系统，它接到电信号能迅速切换气流的方向达到自动控制的目的。

802 solenoid directional valves are widely used for pneumatic auto control system in small installation space with good working conditions. When receiving electrical signals they function to quick.

技术参数 Specification

型号Type			口径 Dia (mm)	接管 Size of part	配用电磁线圈 Solenoid	工作压力 Working pressure (MPa)	Kv值 Kv valve (M ³ /h)	有效截面积S值 Effective sectional area S value (mm ²)
单控常闭式 Single control normal closed	单控常通式 Single control normal open	双控式 Double control						
8020750	8022750	8021750	6	G1/4	0200、0201	0.20~1.00	≥1.2	10
8020850	8022850	8021950	12	G1/2	0270、0271		≤3.0	45

外形尺寸 Outlook & Dimension



型号Type	Ma	Oa	A	B	C	D	E	F	G	H	J	K	L	M	N	P	Q	R	
8020750	8022750	G1/4	3-05.5	68	5	36	18.5	41	55	59	11	24	24.5	7.5	23	34.5	123	5	30
8020850	8022850	G1/2	2-07				23.5	46	85	87	29	33	77.5	31.5	50	-	151	-	35
8021750	8021950	G1/4	3-05.5	68	5	36	18.5	41	55	74	25	24	38.5	21.5	37	48.5	202	5	30
8021950	8021950	G1/2	2-07				23.5	46	65	83		33	73.5	27.5	44	-	211	-	35