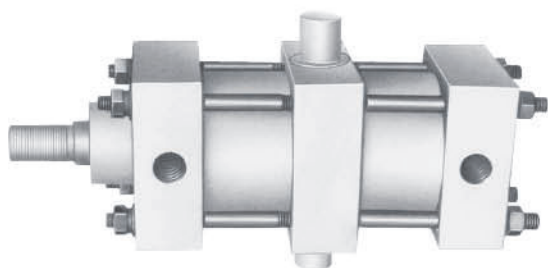
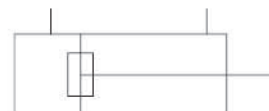


JB 系列冶金气缸 Metallurgical Application Cylinder



图形符号 Graphical symbols



产品特点 Features

单活塞杆 活塞双向作用、具有固定缓冲。符合JB1444 1448-74标准。目前冶金行业广泛应用。性能先进、经久耐用。各种安装形式适合不同用户需要。

Single piston rod, piston action both directions, with fixed buffering, conforming to standard in JB1444-1448-74 currently applied widely in metallurgical industry, featuring advanced level performance and along working life. Available in various installation modes to suit different customer needs.

型号注释 Note for type

JB 50 x 100 - B

冶金设备用气缸 / Metallurgical application cylinder

缸径 / Dia

行程 / Stroke

安装形式代号 Install option

B-中间轴销支承安装型 / B-middle mounting adjustable

G-底座安装型 / G-foot mounting

f-尾部法兰安装型 / f-flange foot mounting

F-头部法兰安装型 / F-flange head mounting

S-尾部单耳环安装型 / S-swivel foot mounting

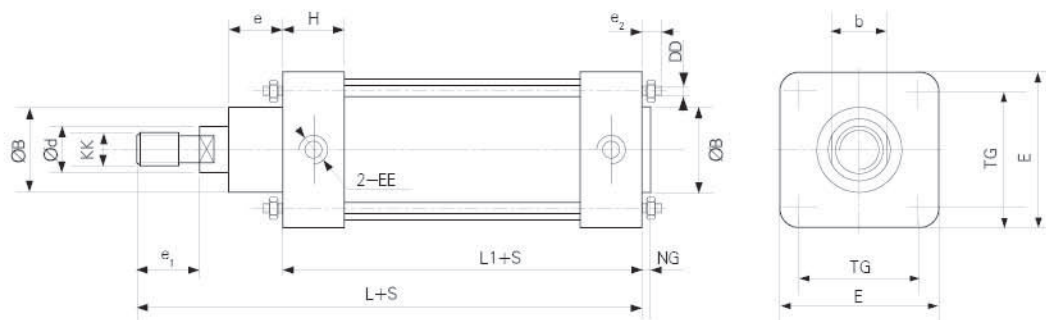
不注代号为基本型 / blank: normal type

技术参数 Specification

项目 Item	参数
工作压力 / Working pressure range:	0.2~1MPa
工作温度范围 / Working tempt range:	-5~+60°C
活塞运动速度 / Piston speed: 50 500mm/s	50~500mm/s
工作介质 / Working medium:	干燥洁净含油雾的压缩空气 Dry and clean compressed air containing oil mist

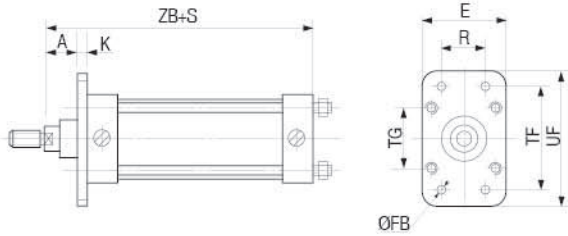
外形尺寸 Outlook & Dimension

基本型 Normal Type



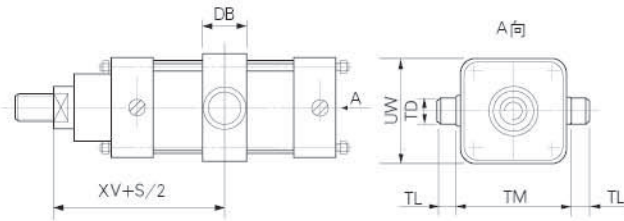
符号 Symbol 缸径 Bore	ØB	d	KK	L	L1	EE	H	e	e1	e2	DD	NG	E	TG	b
80	55	32	M20 × 1.5	240	135	M14 × 1.5	38.5	37	35	30	M12	0	115	85	27
100	55	32	M20 × 1.5	240	135	M14 × 1.5	33.5	39	35	30	M12	0	130	100	27
125	65	40	M24 × 2	310	180	M18 × 1.5	50	40	40	30	M16	0	160	120	32
160	80	40	M24 × 2	310	180	M18 × 1.5	45	47	40	25	M16	0	190	150	32
180	85	50	M30 × 2	350	190	M18 × 1.5	48	55	50	25	M20	5	240	170	41
200	85	50	M30 × 2	350	190	M18 × 1.5	48	55	50	25	M20	5	240	190	41
250	110	70	M42 × 3	450	240	M27 × 2	74	65	60	30	M24	5	290	230	55
320	125	90	M56 × 4	520	260	M33 × 2	70	83	70	30	M30	5	350	280	75
400	125	90	M56 × 4	520	260	M33 × 2	70	83	70	40	M36	5	430	350	75

F-头部法兰安装型 / F-Front flange foot mounting



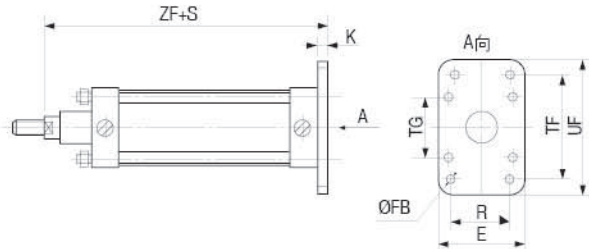
符号Symbol 缸径Bore	ZB	A	K	OFB	R	E	TG	TF	UF
80	205	54	16	13	85	115	85	145	180
100	205	54	16	13	100	130	100	160	200
125	270	70	20	17	120	160	120	200	240
160	270	70	20	17	150	190	150	230	270
180	300	85	25	22	170	220	170	260	320
200	305	85	25	22	190	240	190	280	340
250	395	120	30	26	230	290	230	340	410
320	455	150	40	33	280	350	280	420	500
400	455	150	40	39	350	430	350	490	570

B-中间轴销安装型 / B-middle fulcrum pin mounting



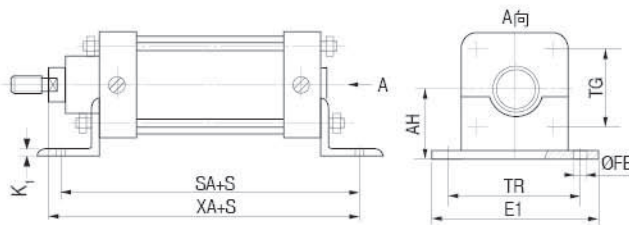
符号Symbol 缸径Bore	XV	DB	OTD	UW	TM	TL
80	137.5	50	30	115	150	30
100	137.5	50	30	140	175	30
125	180	60	40	170	210	40
160	180	60	40	210	240	40
180	205	70	50	230	270	50
200	205	70	50	250	300	50
250	270	100	70	310	360	70
320	320	130	90	400	420	90
400	320	130	90	490	530	90

f-尾部法兰安装型 / f-Rear flange foot mounting



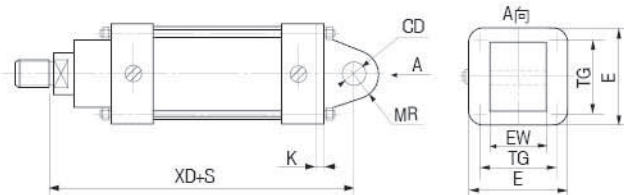
符号Symbol 缸径Bore	ZF	K	OFB	R	E	TG	TF	UF
80	221	16	13	85	115	85	145	180
100	221	16	13	100	130	100	160	200
125	290	20	17	120	160	120	200	240
160	290	20	17	150	190	150	230	270
180	325	25	22	170	220	170	260	320
200	325	25	22	190	240	190	280	340
250	420	30	26	230	290	230	340	410
320	490	40	33	280	350	280	420	500
400	490	40	39	350	430	350	490	570

G-底座安装型 / G-Foot mounting



符号Symbol 缸径Bore	SA	XA	K1	AH	OFB	TR	TG	E1
80	60	167.5	8	85	13	145	85	180
100	60	167.5	8	95	13	150	100	185
125	80	220	10	115	17	190	120	230
160	80	220	10	130	17	210	150	250
180	80	245	13	150	22	230	170	280
200	80	245	14	160	22	260	190	310
250	65	302.5	16	195	26	320	230	390
320	70	355	20	250	33	350	280	420
400	70	355	30	285	39	390	350	470

S-尾部单耳环安装型 / S-swivel foot mounting



符号Symbol 缸径Bore	XD	K	QCD	MR	EW	TG	E
80	255	16	25	25	30	85	115
100	255	16	25	25	30	100	130
125	330	20	30	30	40	120	160
160	330	20	30	30	40	150	190
180	375	25	35	35	50	170	220
200	375	25	35	35	50	190	240
250	475	30	40	40	60	230	290
320	560	40	50	50	80	280	350
400	560	40	50	50	80	350	430