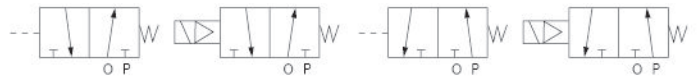


# K23J-W 系列截止式电磁阀

Series directional valves 3/2-way



## 图形符号 Graphical symbols

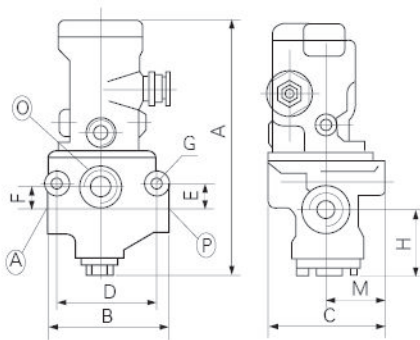
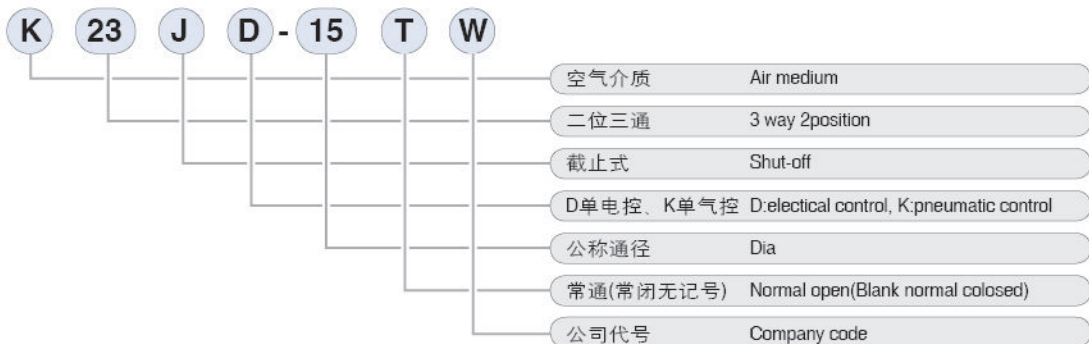


## 产品特点 Features

K23J-W系列是二位三通管接截止式换向阀。该阀结构合理，动作可靠，维修方便，尤其适用于较为恶劣的工作环境。分电控和气控两种。

K23J-W series is pipe fitting shut-off directional valves 3/2 way. Streamlined structure, reliable action easy of maintenance, and especially suited to tough work conditions. Two types: electrically controlled and pneumatical controlled.

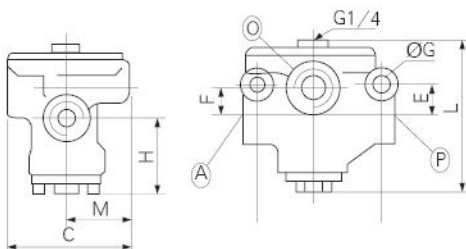
## 型号注释 Note for type



## 技术参数 Specification

型号 type	K22J-8W	K22J-10W	K22J-15W	K22J-20W	K22J-25W	K22J-32W	K22J-40W
流量 Flow rate(m <sup>3</sup> /h)	5	7	10	20	30	40	50
有效截面积S(值 Effective sectional area(mm <sup>2</sup> )	20	35	60	120	190	300	400
泄漏量 Leakage rate(cm <sup>3</sup> /min)	≤50	≤100	≤200	≤300			
换向时间 Direction diverting time(sec)	≤0.04	≤0.06	≤0.10	≤0.15			
切换频率 Switch-over frequency Hz	≥10	≥8	≥4	≥3			
工作压力 Working pressure(MPa)	0.2~0.8						
电压 Voltage(V)	AC:380,220,110,36 DC:220,110,24						
环境温度 Ambient temperature(°C)	-5~50						

## 外形尺寸 Outlook & Dimension



型号Type	公称通径 Port Size		A	B	C	D	E	F	G	H	M	L	O
	Dia	(英制)G (公制)M											
K23J-8W. K23J-8TW	Ø8	G1/4 M12x1.25											
K23J-10W. K23J-10TW	Ø10	G3/8 M16x1.5	180	96	78	73	17	16.5	Ø9	45	39	85	G1/2
K23J-15W. K23J-15TW	Ø15	G1/2 M20x1.5											
K23J-20W. K23J-20TW	Ø20	G3/4 M27x2	195	113	89	82	24	21	Ø9	52	38	105	G1
K23J-25W. K23J-25TW	Ø25	G1 M33x2											
K23J-32W. K23J-32TW	Ø32	G1¼ M42x2	268	165	121	118	37	46	Ø13	75	46	170	G1½
K23J-40W. K23J-40TW	Ø40	G1½ M46x2											