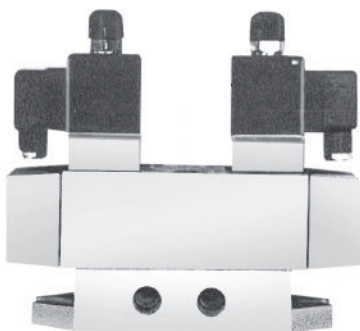


K/Q

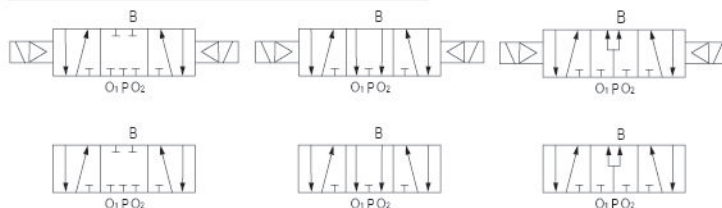
系列滑柱式电磁阀 Series Spool Valve

K35

K35 系列三位五通换向阀 Series 5/3-ways directional valves



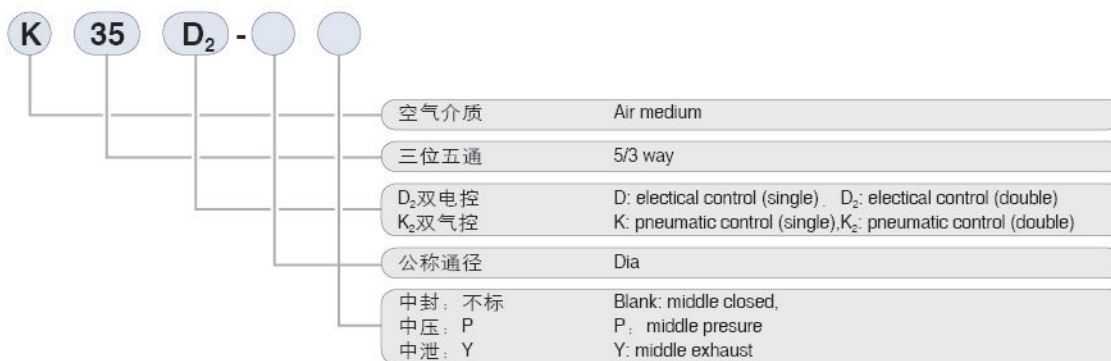
图形符号 Graphical symbols



产品特点 Features

该阀是具有三个位置的换向阀，其中位分三种型式：
(a) 中位封闭式，(b) 中位泄压式，(c) 中位加压式。
This directional valve has 3 positions, three types as follows:
(a) middle closed, (b) middle exhaust, (c) middle pressure

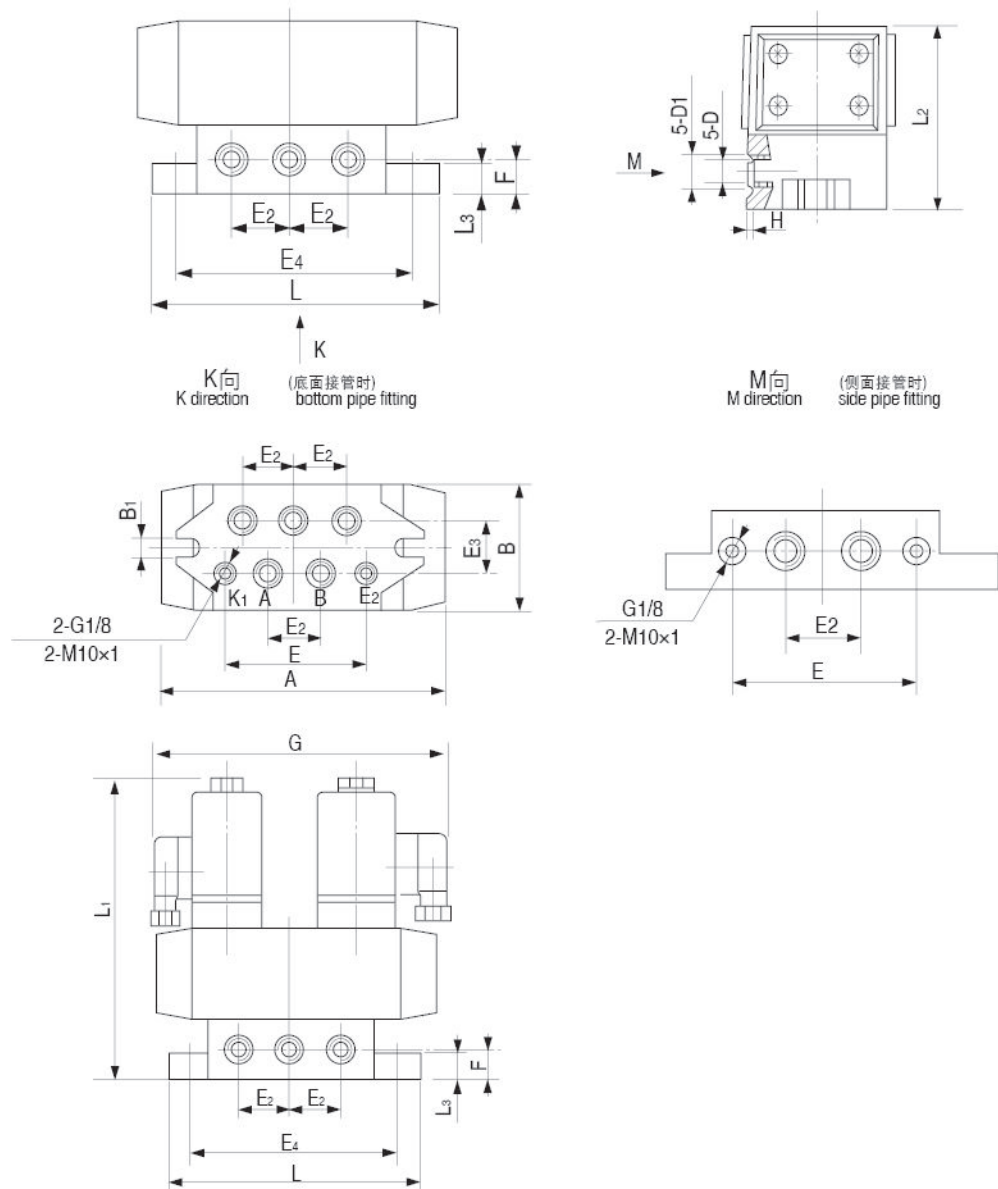
型号注释 Note for type



技术参数 Specification

型号 Type	K35HD ₂ -6(Y)(P)	K35HD ₂ -8(Y)(P)	K35HD ₂ -10(Y)(P)	K35HD ₂ -15(Y)(P)	K35HD ₂ -20(Y)(P)	K35HD ₂ -25(Y)(P)
参数 Item						
公称通径 Dia(mm)	6	8	10	15	20	25
工作压力范围 Working pressure range(Mpa)						
泄漏量 Leakage rate(mL/min)		50		120		250
换向时间 Direction diverting time(sec)		≤0.06		≤0.06		≤0.06
最高切换频率 Max switch over frequency(Hz)		≥8		≥6		≥4
环境温度 Tempt ambient(°C)		-5~50		-5~50		-5~50
介质温度 Tempt medium(°C)		0~50		0~50		0~50
有效截面积S值 Effective sectional area S value(mm ²)	10	20	40	60	110	190
寿命(万次) Working life (10K times)		≥150		≥150		≥150
电压 Voltage(V)	AC220 DC24					
电磁先导阀公称通径 Nominal passage dia of solenoid pilot valve(mm)		1.2		2		3

外形尺寸 Outlook & Dimension



型号 Type	E ₄	B ₁	D	D ₁	H	L ₁	B	L ₂	G	E ₂	L	A	E ₃	F	L ₃	E
K35HD ₂ (Q ₂)-6(Y,P)	112	9	G1/8 M10x1	Ø13	1.8	54	40	137.5	146	20	112	148	18	14	10	60
K35HD ₂ (Q ₂)-8(Y,P)	113	9	G1/4 M12x1.25	Ø14	1.8	68	40	137.5	151	28	132	148	24	14	10	74
K35HD ₂ (Q ₂)-10(Y,P)	146	9	G3/8 M16x1.5	Ø20	1.8	90	47	178	182	38	166	182	33	19	14	98
K35HD ₂ (Q ₂)-15(Y,P)	146	9	G1/2 M20x1.5	Ø26	1.8	90	47	178	182	38	166	182	33	19	14	98
K35HD ₂ (Q ₂)-20(Y,P)	202	11	G3/4 M27x2	Ø32	2.7	129	73	229	252	60	234	252	52	30	15	135
K35HD ₂ (Q ₂)-25(Y,P)	202	11	G1 M33x2	Ø40	2.7	129	73	229	252	60	234	252	52	30	15	135