

# KA 系列单向阀

## Series one way Valves

### KA 系列单向阀

#### Series one way valves



#### 图形符号 Graphical symbols

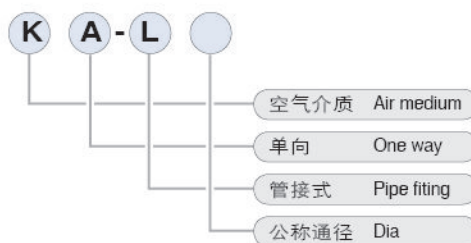


#### 产品特点 Features

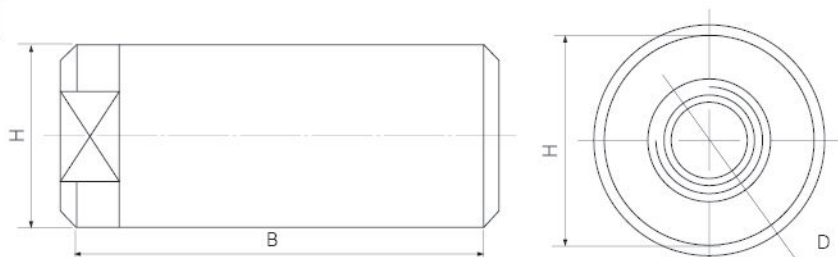
KA-L系列为单方向型控制元件，空气只能从P→A正向流动，反向截止，使回路中空气不能回。

KA-L series are a one way type controlling element, i.e air flows from P to A only, the reverse flow is shut off, making it impossible for air to flow back.

#### 型号注释 Note for type



#### 外形尺寸 Outlook & Dimension



型号 Type	KA-L10	KA-L15	KA-L20	KA-L25	KA-L32	KA-L40	KA-L50
A	Ø40	Ø40	Ø54	Ø54	Ø88	Ø88	Ø100
B	86	86	112	112	161	161	195
C	36	36	46	46	75	75	95
D	G3/8 M16x1.5	G1/2 M20x1.5	G3/4 M27x2	G1 M33x2	G1¼ M42x2	G1½ M48x2	G2 M60x2

#### 技术参数 Specification

型号 Item	KA-L10	KA-L15	KA-L20	KA-L25	KA-L32	KA-L40
参数 Type						
接管螺纹 Port size(DM)	G3/8 M16x1.5	G1/2 M20x1.5	G3/4 M27x2	G1 M33x2	G1¼ M42x2	G1½ M48x2
公称口径 Dia(mm)	10	15	20	25	32	40
工作介质 Work medium	经过滤的压缩空气 Compress air after filter					
工作压力 Working pressure(MPa)	0.05-0.8					
开启压力 Start pressure(MPa)	0.05					
环境温度 Tempt ambient(°C)	5-60					