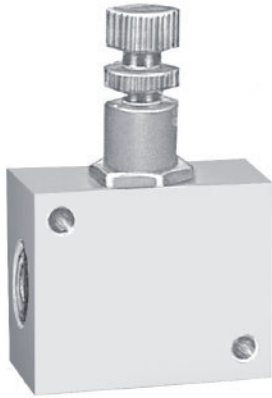
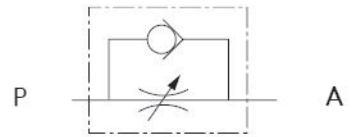


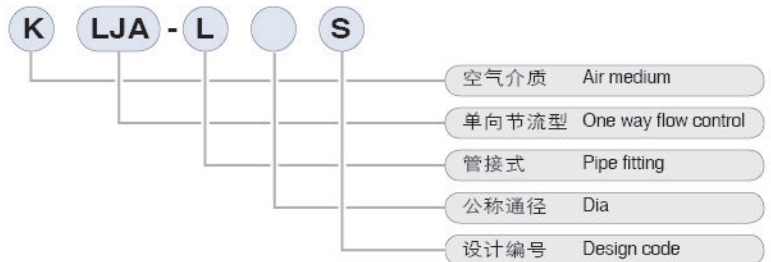
KLJA-S 系列单向节流阀 Series one way flow check valves



图形符号 Graphical symbols



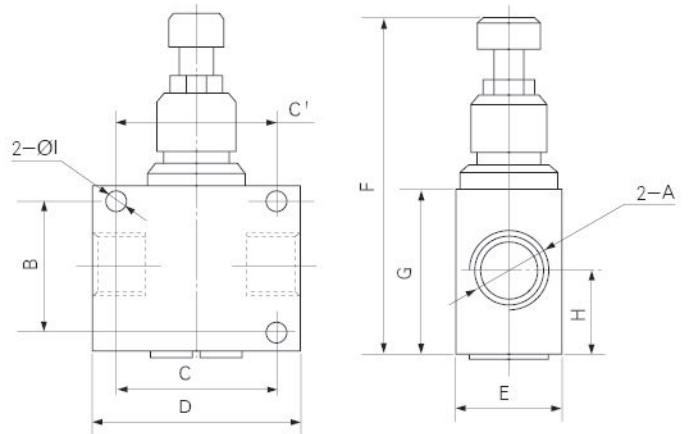
型号注释 Note for type



产品特点 Features

单向节流阀是一种广泛用于调节气缸运行速度的阀。它是单向阀和节流阀并联而成的组合式控制阀。

One way flow control valve is widely used for adjusting cylinder speed. It is an integral control valve formed up by a one way valve and a control valve.



外形尺寸 Outlook & Dimension

型号 Type	A(接口螺纹/Size of port)		B	C	D	E	F	G	H	I
KLJA-L3S	G1/8	M10x1			33	16	45	25	12.5	4
KLJA-L6S	G1/8	M10x1	25	30	40	20	62	32	16	4
KLJA-L8S	G1/4	M12x1.25	25	30	40	20	62	32	16	4
KLJA-L10S	G3/8	M16x1.5	28	38	50	25	79	40	20	5.5
KLJA-L15S	G1/2	M20x1.5	36	46	60	28	88	50	25	6.5
KLJA-L20S	G3/4	M27x2	50	66	86	48	156	68	34	6.5

技术参数 Specification

型号 Type		KLJA-L3S	KLJA-L6S	KLJA-L8S	KLJA-L10S	KLJA-L15S
指标 Item						
公称通径直 dia(mm)		3	6	8	10	15
有效截面积S值 Effective sectional area S (mm ²)	控制流道 controlled stream road P→A	3	5	10	20	30
	自由流道 free stream road A→P	5	10	20	40	60
压力范围 Pressure range(MPa)		0.05~0.8				
开启压力 Start pressure(MPa)		≤0.05				
环境温度 Tempt ambient(°C)		5~50				
介质温度 Tempt medium(°C)		5~50				
泄流量 Leukage flow rate(mL/min)		100			200	
耐久性(万次) Kurability(10K times)		200				