

K/Q

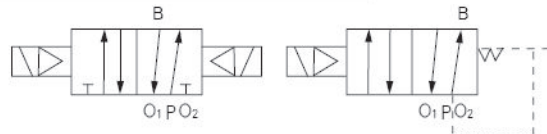
系列滑柱式电磁阀 Series Spool Valve

Q24H

Q24H 1-55



图形符号 Graphical symbols



产品特点 Features

二位四通滑阀是气动装置中改变气流方向的基本元件。也是最具历史悠久的传统产品。

4/2-ways spool valve is the basic element for changing air flow direction in pneumatic mechanisms, is also the most traditional product.

型号注释 Note for type

Q 24 D H - 10

空气介质 Air medium

二位四通 4/2 -way

D: 单电控、D₂双电控 D: electrical control (single), D₂: electrical control (double)

Q: 单气控、Q₂双气控 Q: pneumatic control (single), Q₂: pneumatic control (double)

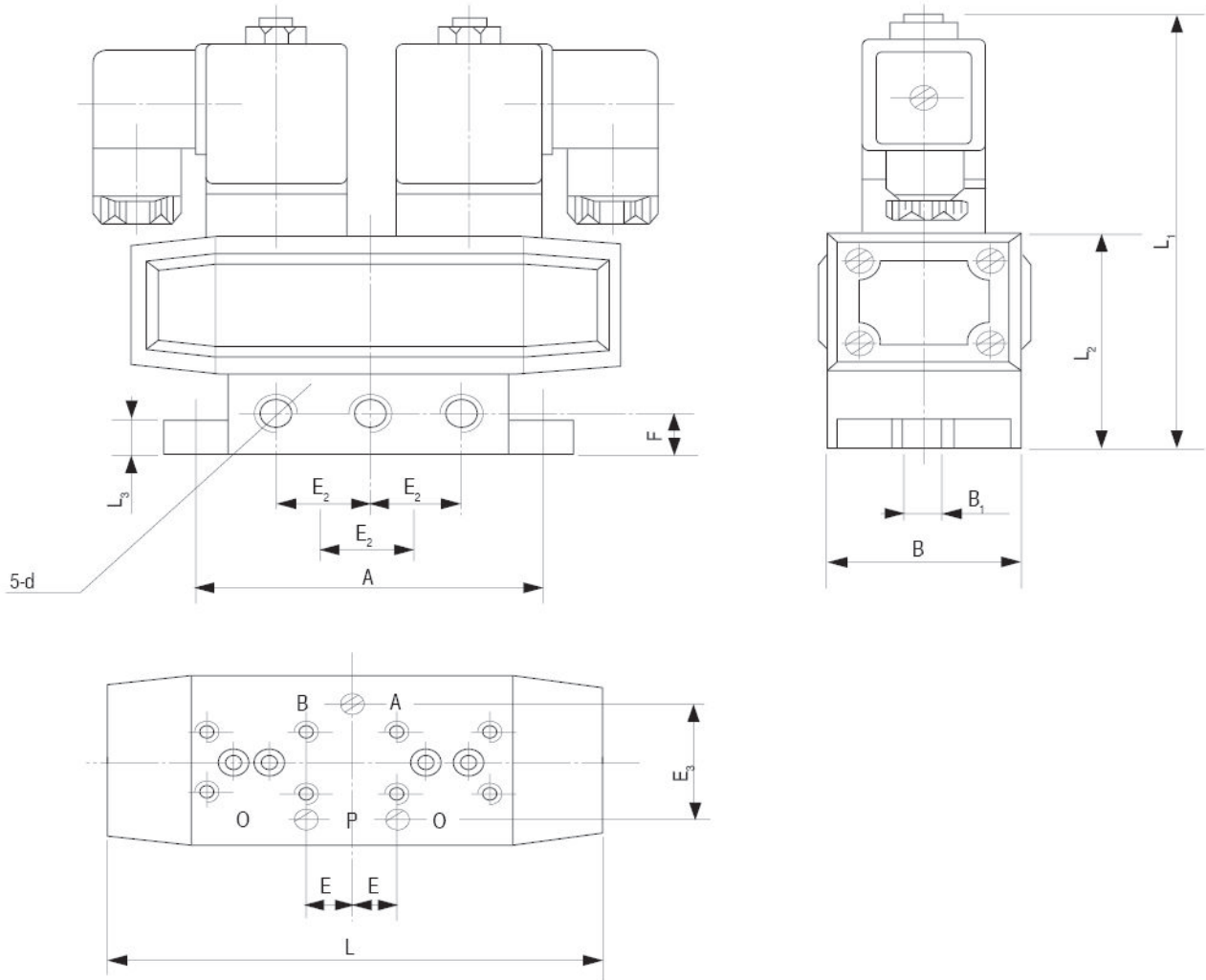
滑阀 spool valve

公称口径 Dia

技术参数 Specification

型号Type	Q24DH-6(8) Q24D ₂ H-6(8)	Q24DH-10(15) Q24D ₂ H-10(15)	Q24DH-20(25) Q24D ₂ H-20(25)
参数Item			
工作压力 Working pressure(MPa)		0.2-0.8	
气源介质温度Temp y as media(°C)		0-50	
工作电压 Voltage(V)		AC220 50Hz, AC110 50Hz, AC36 50Hz ; DC36, DC24, DC12	
环境温度 Ambient tempt(°C)		5-50	
换向时间Diverting time(sec)	0.04	0.06	0.10
泄漏量 Leakage rate(mL/min)	50	100	200
换向频率 Switch over frequency(Hz)	10	8	5
有效截面积S值 Effective sectional area(mm ²)	10(20)	40(60)	110(190)

外形尺寸 Outlook & Dimension



型号Type	接管螺纹port size d		A	B	B ₁	L	L ₁	L ₂	L ₃	E	E ₂	E ₃	F
	英制 G	公制 M											
Q24DH-6(8)	G1/8	M10 × 1	94	50	9	133	139	65	10	12	24	34	12
	G1/4	M12 × 1.25											
Q24DH-10(15)	G3/8	M16 × 1.5	133	60	9	171	160	85	12	18	36	40	17.5
	G1/2	M20 × 1.5											
Q24DH-20(25)	G3/4	M27 × 2	204	112	12	241	206	129	15	30	60	88	30
	G1	M33 × 2											