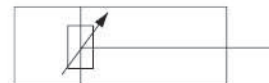


# QGHD 系列点焊机压紧气缸

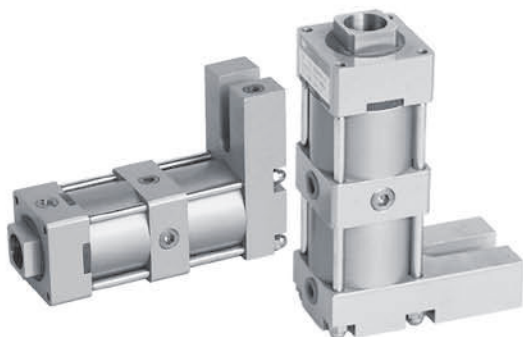
## Sport-welder Clamping Cylinder

### 图形符号 Graphical symbols



### 产品特点 Features

- 焊枪与机体绝缘气缸活塞杆位置可调。但又可防迂转。
- 气缸活塞杆头部有莫氏3号锥孔。使焊枪安装更为简便。
- 焊枪压紧力大。是两倍的单缸输出力能保证焊接加工质量。
- Relative positions of the welding gun and welding machine insulator cylinder piston rod are adjustable and yet still preventive of turning back.
- End of piston rod has coned hole of NO3 Moh's hardness to make it easy for fitting on the welding gun.
- Great clamping force of welding gun, twice that of the single cylinder output to ensure welding quality.



### 型号注释 Note for type

QGHD

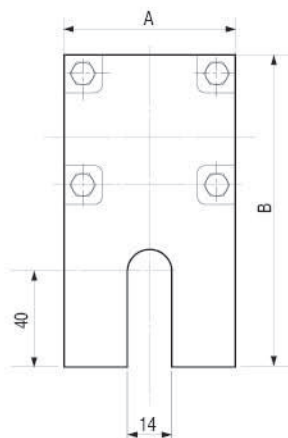
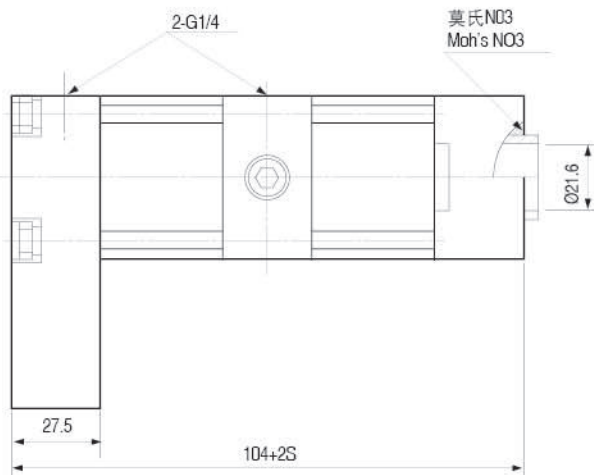
50 x 25

点焊用气缸 / Sport-welder Clamping Cylinder

缸径 / Dia

行程 / Stroke

### 外形尺寸 Outlook & Dimension



符号 Symbol	A	B	S
缸径 Bore			
45	50	105	25
50	55	108	65

### 使用事项 Maintenance

该产品用于点焊机。焊枪压紧。压紧力大小与缸径有关。可根据所需压紧力来选择缸径。使用时焊枪位置可以调整。方法是先让焊枪伸出。关闭系统。再松开四拉杆螺帽。然后调整焊枪位置。

注意：使用清洁干燥的压缩空气。防止受潮。以免降低绝缘性能。

This cylinder is apply to welding machine, fuction to press the welding gun. the value of pressure base on the size of the bore. To adjustment welding gun position first close the system. loosen the nuts, then do the adjustment.

Note: please use the clean, dry air, avoid the air wet.

### 选用事项 Tips

用户可根据自己需要。在规定行程范围内。任意选择行程。若超出规定范围的则仍可以协商加工订货。

Please select the best stroke from the stroke range we offered accordingly. If out of range we can make it speccial.