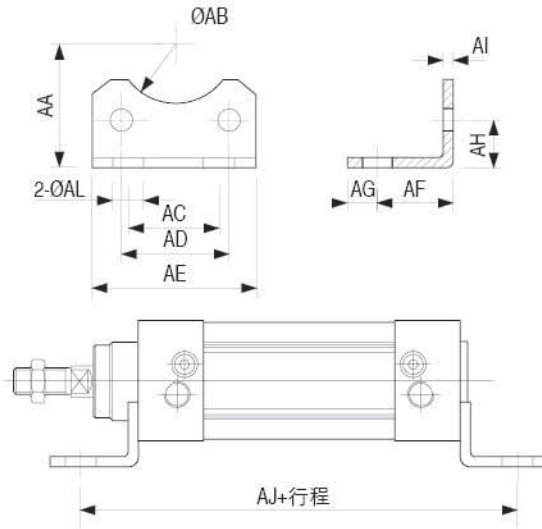


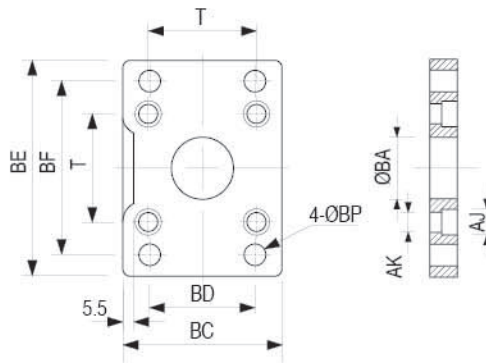
安装形式及辅件 Install Option and Accessory

LB 脚架 / LB Foot Rest



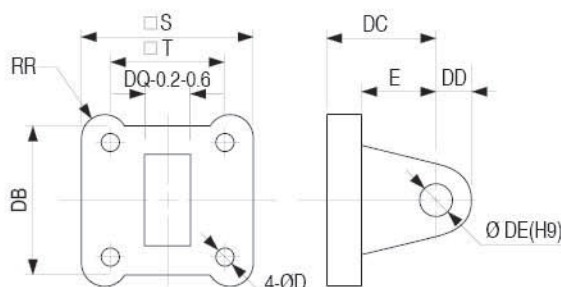
缸径 Bore 符号symbol	32	40	50	63	80	100
AA	32	36	45	50	63	71
AB(min)	30	35	40	45	45	55
AC	32	38	46	56	72	89
AD	32.5	38	46.5	56.5	72	89
AE	45	52	65	76	94	112
AF	24	28	32	31.5	41.5	41.5
AG	9	11	11	11	14	16
AH	15.8	17	21.8	21.8	27	26.5
AI	3.2	3.2	3.2	3.2	4	4
AJ	142	161	170	185	210	220
AK	6.5	6.5	8.5	8.5	10.5	10.5
AL	7	9	9	9	12	14

FA、FB 法兰 / FA, FB Flange



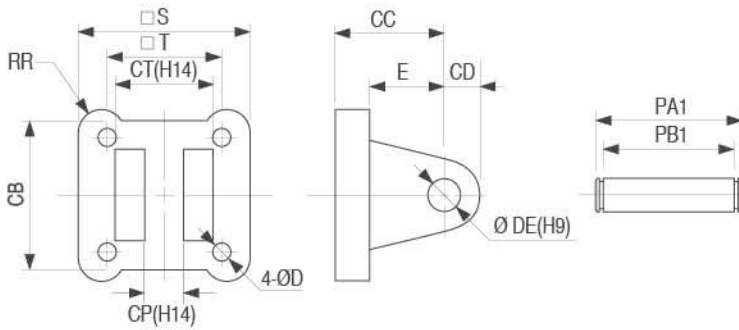
缸径 Bore 符号symbol	32	40	50	63	80	100
BA	30.3	35.3	40.3	45.3	45.3	55.3
BB	10	10	12	12	16	16
BC	45	52	65	76	94	112
BD	32	36	45	50	63	75
BE	80	90	110	120	150	175
BF	64	72	90	100	126	150
BH	6.5	6.5	8.5	8.5	10.5	10.5
AJ	10.5	10.5	13.5	13.5	16.5	16.5
AK	6.5	6.5	8.5	8.5	10.5	10.5
BP	7	9	9	9	12	14
T	32.5	38	46.5	56.5	72	89

CA 单耳环 / CA Single earring



缸径 Bore 符号symbol	32	40	50	63	80	100
S	45	52	65	76	94	112
T	32.5	38	46.5	56.5	72	89
RR	6.5	6.5	9	9.5	11	11.5
DB	34	41	54	65	83	101
DC	22	25	27	32	36	41
DD	10	11	13	16	16	20
DE	10	12	12	16	16	20
DQ	26	28	32	40	50	60
D	6.5	6.5	8.5	8.5	10.5	10.5
E	14	17	17	22	24	25

CB 双耳环 / CB Double earring



P A 1 缸 径 BorePB 符号symbol	32	40	50	63	80	100
S	45	52	65	76	94	112
T	32.5	38	46.5	56.5	72	89
D	6.5	6.5	8.5	8.5	10.5	10.5
E	14	17	17	22	24	25
RR	6.5	6.5	9	9.5	11	11.5
CB	34	41	54	65	83	101
CC	22	25	27	32	36	41
CD	10	11	13	16	46	20
CE	10	12	12	16	46	20
CP	26	28	32	40	50	60
CT	45	52	60	70	90	110
PA1	53	60	68	78	100	120
PB1	46.5	53.5	61.5	71.5	91.5	111.5