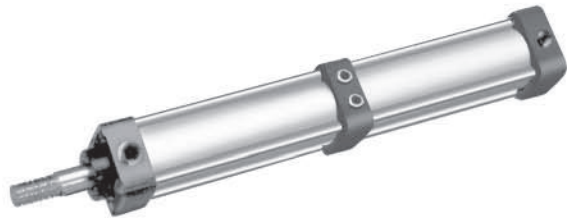
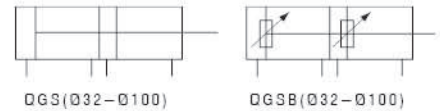


## QGSS 系列串联气缸 series connect cylinder



### 图形符号 Graphical symbols



### 产品特点 Features

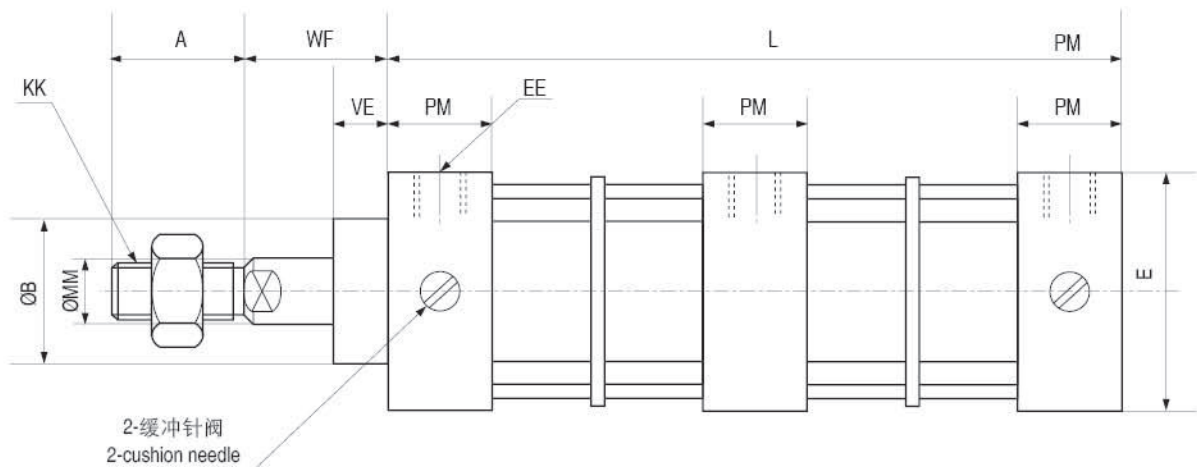
QGSS串联气缸是由两个缸径和行程相同的QGS单活塞双作用气缸组成。其拉力为QGS气缸的两倍。推力为QGS气缸的推力和拉力之和。该气缸亦可作增力气缸用。

QGSS serial connected cylinder is made up by two same QGS single piston double action cylinder. The pull force is two times than QGS cylinder and push force is sum of QGS cylinder's force and push. It can be used as stronger power cylinder.

### 技术参数 Specification

工作介质 / Working medium	干燥洁净含油雾的压缩空气 / Dry and clean compress air
工作压力范围 / Working pressure range	0.15-1MPa
耐压 Pressure bear	1.5MPa
工作温度范围 / Working tempt range	5-60°C

### 外形尺寸 Outlook & Dimension



缸径Dia	A	B	E	WF	VE	PM	MM	EE	KK	L
40	24	32	55	30	23	25	16	G1/4	M12x1.25	181
50	32	36	65	35	25	25	20	G1/4	M16x1.5	187
63	32	36	80	35	25	30	20	G3/8	M16x1.5	220
80	40	45	95	46	30	30	25	G3/8	M20x1.5	226
100	40	50	115	51	35	35	25	G1/2	M20x1.5	241