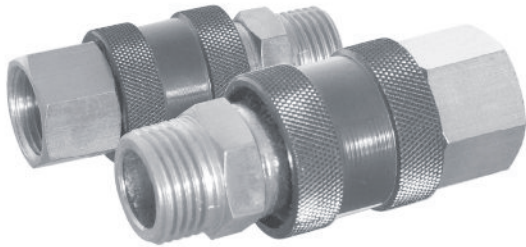
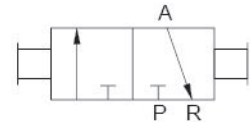


# SH 系列手动滑阀

## Series Manual Spool Valve



### 图形符号 Graphical symbols



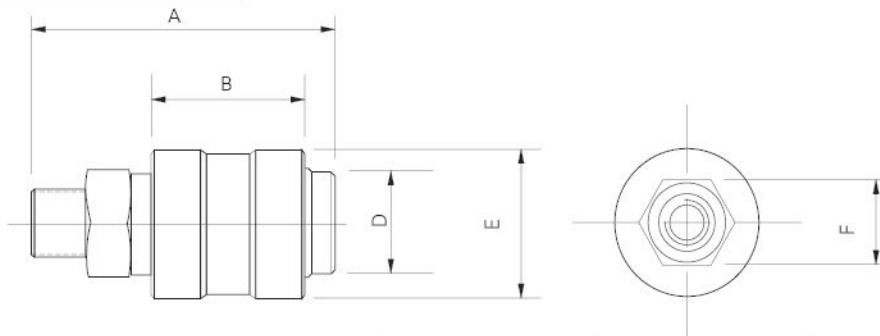
### 型号注释 Note for type



### 技术参数 Specification

型号 Type	SH-06	SH-08	SH-10	SH-15
接管口径 Pipe size	G1/8	G1/4	G3/8	G1/2
通径 Dia	6	8	10	15
工作介质 workin medium	经过滤的压缩空气 Compression filtered			
使用压力范围 working pressure	0~1.0MPa			
使用温度 working temp	-5~60℃			

### 外形尺寸 Outlook & Dimension



型号 Type	SH-06	SH-08	SH-10	SH-15
规格 Item				
A	47	55	57	72
B	26	30	30	30
C	G1/8	G1/4	G3/8	G1/2
D	Ø14	Ø18	Ø21	Ø21
E	Ø21	Ø26	Ø30	Ø30
F	15	19	22	24